

THE MICHELIN[®] X[®] UM HAUL TIRE



PRODUCTIVITY UNDER HEAVY HAULS

THE MOST PRODUCTIVE TIRE FOR UNDERGROUND MINING
HAUL TRUCKS GREATER THAN 60 TONS.



INCREASE YOUR PAYLOAD & IMPROVE PRODUCTIVITY

The MICHELIN® X® UM HAUL tire is specifically built to handle the unique conditions of underground mining. In fact, it's the most productive tire on the market¹ for trucks greater than 60 tons, offering higher load-carrying capacity, more distance per hour and excellent adhesion.

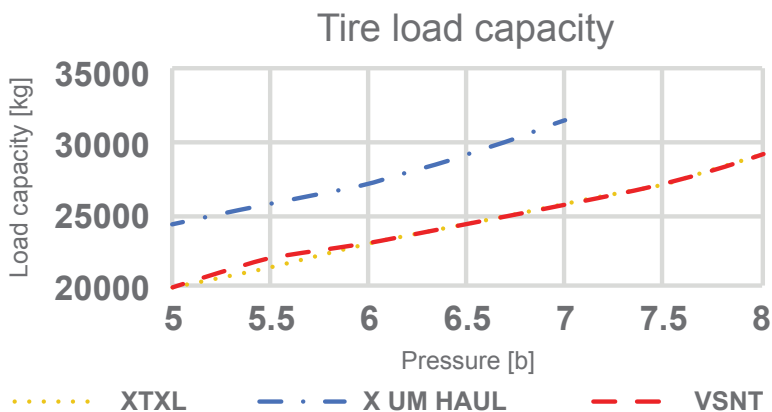
1 WORK SMARTER WITH THE MOST PRODUCTIVE TIRE ON THE MARKET^{1,2}

The high load-carrying capacity and speed of the MICHELIN® X® UM HAUL tire makes it the most productive tire of its size on the market, with up to 360 TKPH.



2 HANDLE HEAVY LOADS WITH NEW TECHNOLOGY

The MICHELIN® X® UM HAUL tire is designed with new, bigger cables; innovative, 6-ply architecture; and that lets trucks get 8.6% more³ load capacity, to carry up to 31.5 tons at 7 bar. This surpasses the industry average of 29 tons at 8 bar.^{2,4}



Innovative, 6-ply architecture and layering technology create a strong and durable tire.

Homologated by the EPICROC MT65

¹The new MICHELIN® 35/65R33 X® UM HAUL is the MOST PRODUCTIVE Underground TIRE ON THE MARKET. For trucks greater than 60 tons of Payload, with up to 360 TKPH

²Based on comparisons to the 2021 Bridgestone Databook, and the 2020 Goodyear Databook. Actual results may vary.

³The new MICHELIN® 35/65R33 X® UM HAUL get 8.6% more load capacity, to carry up to 31.5 Tons at 7 BAR due to new cables, architecture and larger tire

⁴Compared to MICHELIN® XTXL®S 35/65R33, as set forth in the 2019 Michelin Data Book. Actual results may vary.

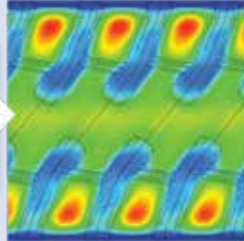
3 GAIN MORE DISTANCE IN AN HOUR



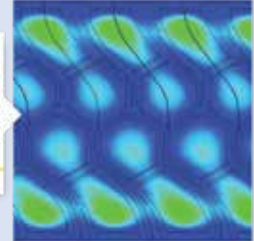
COOLER RUNNING COMPOUND

Cooler rubber compounds let your trucks maintain an average max distance of 14 km per hour¹ while carrying more.

29 TONS AT 8 BAR
MICHELIN[®] XTXL[®]

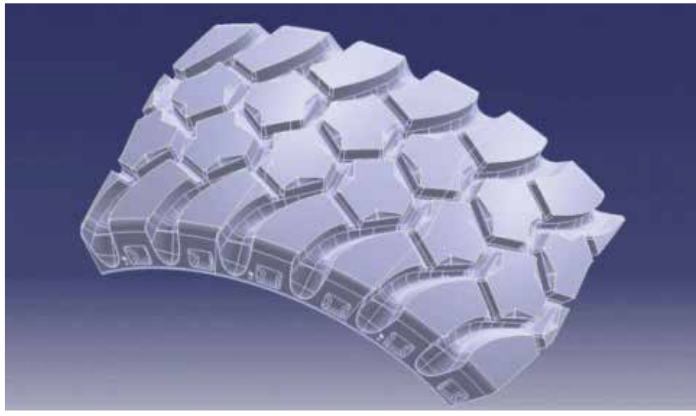


31.5 TONS AT 7 BAR
MICHELIN[®] X[®]UM HAUL



4 GET SUPERIOR ADHESION² FOR BETTER GRIP

The MICHELIN[®] X[®] UM HAUL tire is designed with a center groove that increases grip, along with a **new, innovative tread pattern** for conquering underground mining operations.



¹ The new MICHELIN[®] 35/65R33 X[®] UM HAUL was designed to 14 KM MAX DISTANCE PER HOUR thanks to a larger tire and cooler compound

² The new MICHELIN[®] 35/65R33 X[®] UM HAUL was designed to EXCELLENT ADHESION thanks to a new innovative tread pattern that increases grip

TIRE SPECIFICATIONS

COMMERCIAL DESCRIPTION	CAI MSPN	Max. dist./ hour km mile	TKPH TMPH	e mm inch	D mm inch	R' mm inch	RC mm inch	Tread Depth mm 32nd	Cap liter gallon	Measuring Recommended Rim
X* UM HAUL ***** SH-4 TL 35/65R33 Tubeless	645051 78667	14 8.7	360 247	922 36.3	2081 81.9	910 36	6208 244	60 76	1505 53.1	28.00/3.5
Bar	4.5	5	5.5	6	6.5	7				
<i>Psi</i>	65	73	80	87	94	102				
Machine - Use (kg - lbs)	TRANSPORT									
STANDARD	23000 50715	24300 53582	25750 56779	25750 60086	29000 63945	31500 69458				



Business.MichelinMan.com/mining-quarries

Copyright © 2021 Michelin North America, Inc. All rights reserved.
The Michelin Man is a registered trademark owned by Michelin

